

Company Overview

Who We Are

JAG is a privately owned American company based in Kentucky with international offices and warehousing in Ningbo, China, Hanoi, Vietnam & Mumbai, India

We have over a century of manufacturing, engineering, customer service, & sales experience

Business in US, Mexico, Canada, Europe, China, Taiwan, India, Philippines, S. Korea & Thailand

Global Manufacturers & Supply Chain

100% Quality Driven

JAG provides a robust single-origin manufacturing solution that is highly versatile and easily scalable. We've built a service offering that can expand or contract to meet our clients' revolving needs along any point in the manufacturing process, from original concept to end customer delivery.

- JAG provides high-quality, engineered metal, plastic components & assemblies to major OEM's throughout the world
- JAG Mfg. is a privately-owned American company based in Kentucky with International offices, Manufacturing & warehousing in Hopkinsville, KY, Ningbo, CN, Hanoi, VT, San Luis Potosi, MX
- Combined, we have centuries of manufacturing, engineering, quality, customer service, & sales experience
- Customers throughout North America
- Sourcing with US & International suppliers (Utilizing over 50 Vetted & Battle-Tested Suppliers with 12 Co-Owned & JV Suppliers)

OUR LOCATIONS

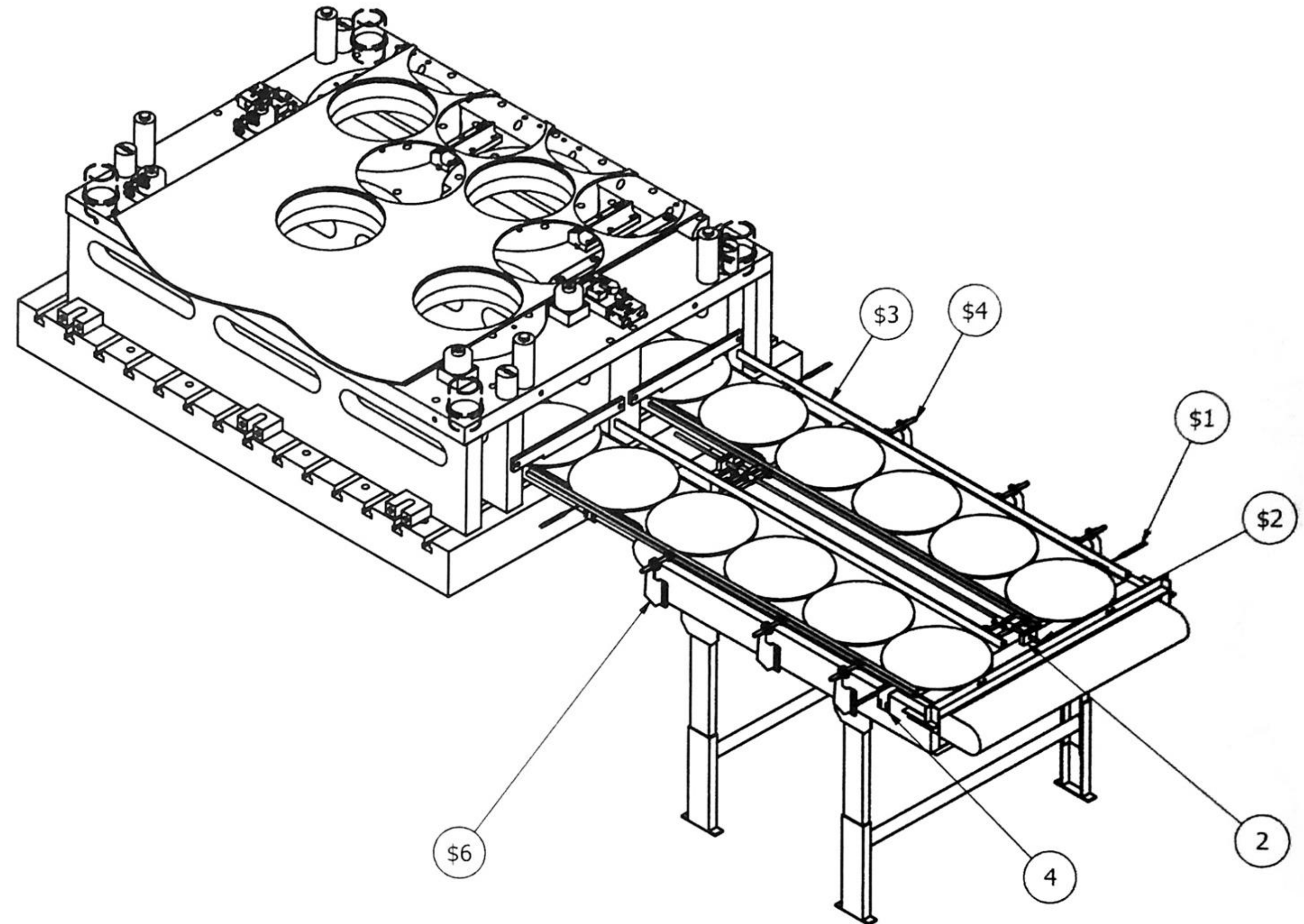


IDEATION, INTUITIVE DESIGN, PROTOTYPING, & ENGINEERING

We help clients imagine their product and bring it to life through intuitive design. Intuitive design means we always consider the manufacturing and production implications of our design recommendations. [Smarter builds correlate to cost savings which all start in the design phase.](#)

Our services include:

- Product Development
- Manufacturing Process Selection
- Engineering
- Prototyping
- IP & Patents

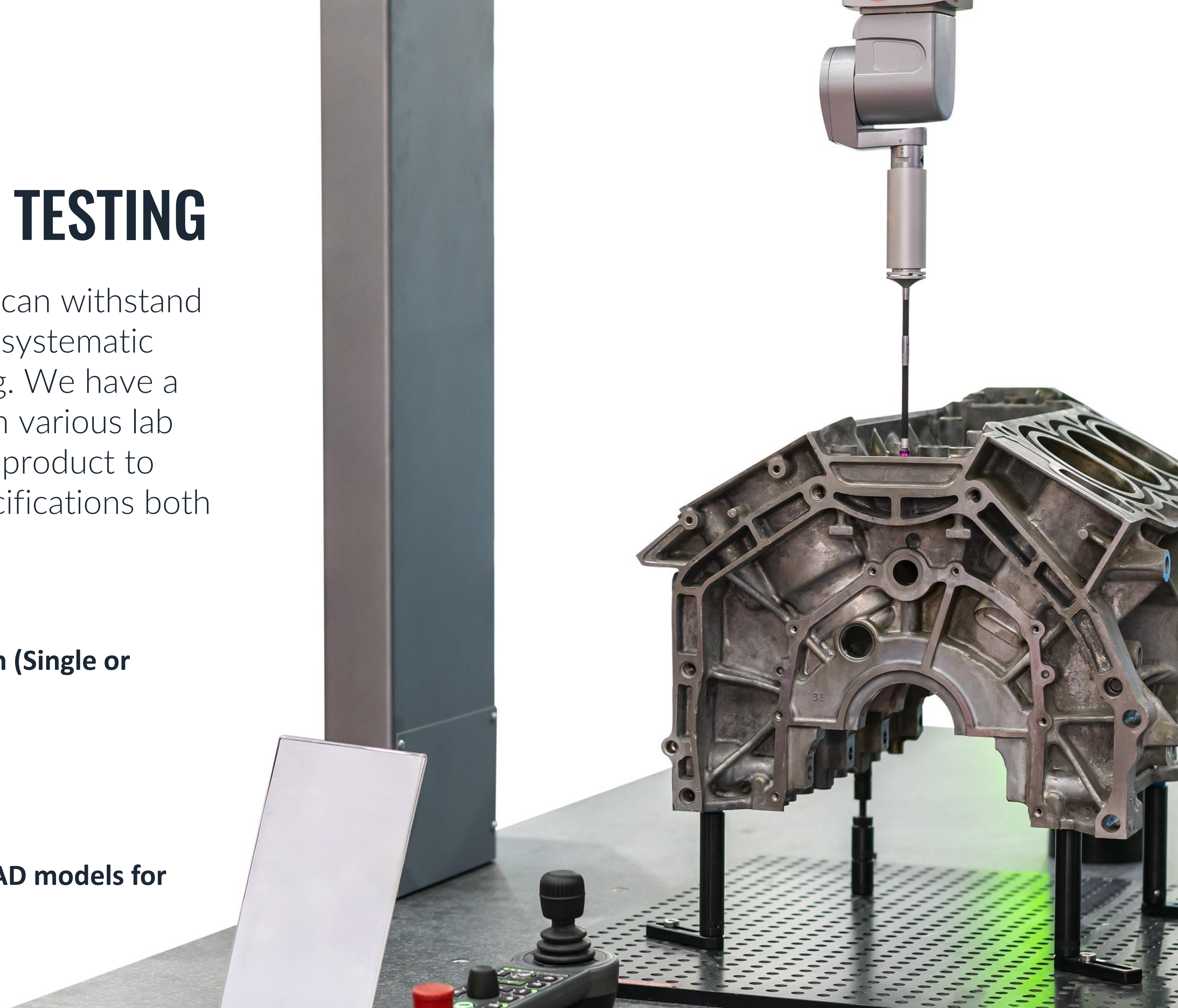


QUALITY CONTROL & TESTING

We ensure that product designs can withstand the demands of real life through systematic quality control and robust testing. We have a resident metallurgist and perform various lab tests on the material used in the product to make sure it meets required specifications both off-shore and domestically.

Our services include:

- **Quality Control & Inspection (Single or Dual Location)**
- **Metallurgist**
- **Lab Testing**
- **Blue Light Scanning to 3D CAD models for Reverse Engineering**



MANUFACTURING & ASSEMBLY

This company was founded in manufacturing and our capabilities are sophisticated and wide-ranging. We'll provide you a turn-key solution regardless of how complicated or challenging the manufacturing and/or assembly process might be.

Our services include:

- Machining
- Casting/Permanent Mold
- Stamping/Fine Blanking
- Progressive Die Tooling
- Forging (Hot & Cold)
- Plastic Injection Molding
- Welding
- Vibration Welding
- Assembly & Kitting
- Powder Coating
- Painting
- Etching & Blasting
- Polishing
- Plating
- Raster
- Laser-Cutting
- High Resolution Printing
- Pad Printing/Screen Printing
- Packaging
- Wire Braiding
- Wire Over-Molding



LOGISTICS, SUPPLY CHAIN, & PROGRAM MANAGEMENT

Our services include:

- Supply Chain Management
- Inventory Management
- Weekly Supplier Inventory Reports
- Contingency Planning (Safety Stocks)
- Freight Consolidation
- Warehouse Management
- Tariff and Duty Engineering



TARIFFS & INTERNATIONAL TRADE

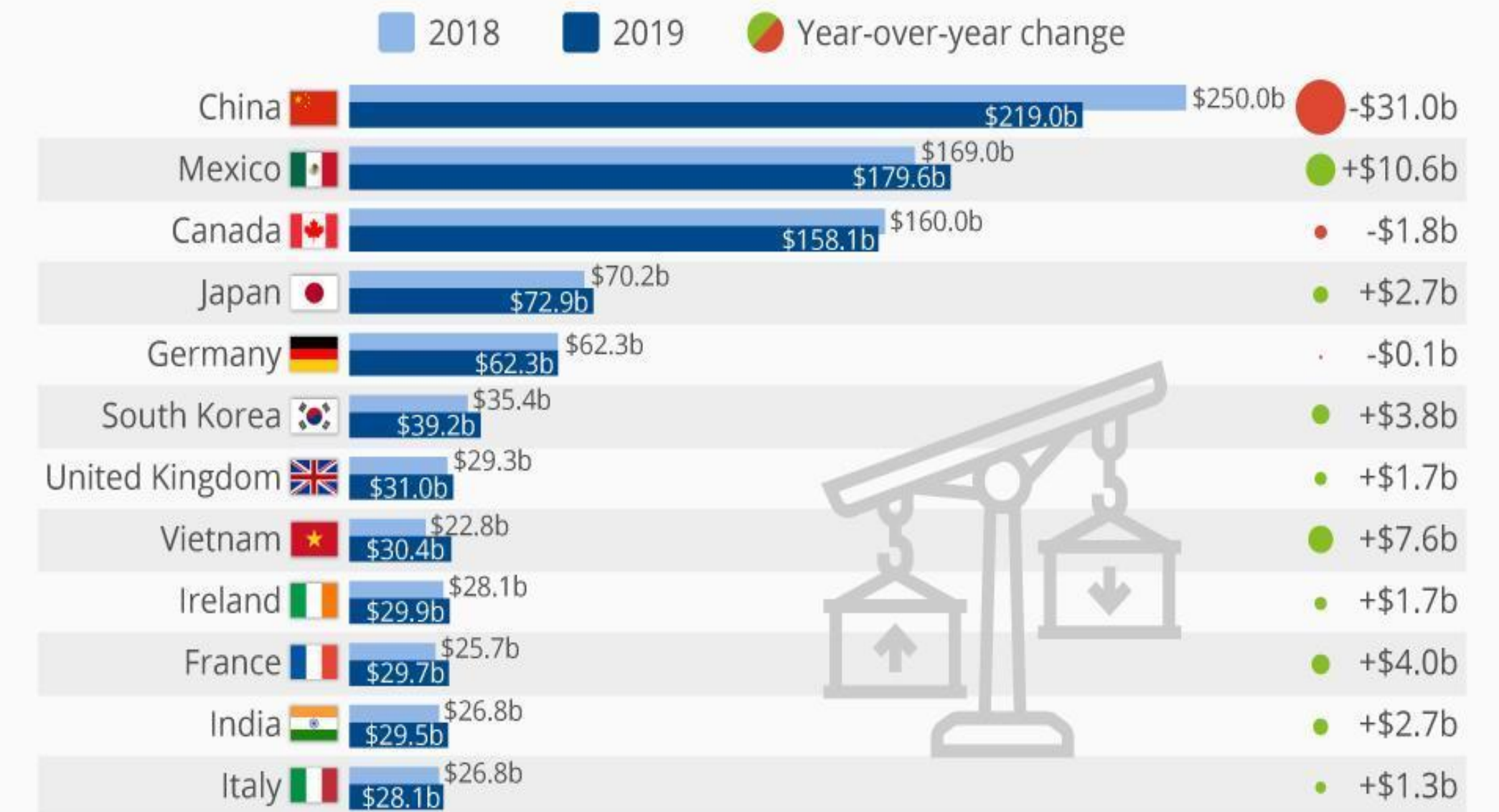
JAG provides fully integrated tariff analysis and multi-level solutions for all components sourced.

Our services include:

- HTC Classification Services
- HTC Exclusion & Refund Request Services
- HTC Custom Ruling Filing Services

Trade War Causes \$31 Billion Drop in Chinese Imports

U.S. imports of goods in the first half of 2019 vs. 2018 (at customs value*)



* Customs value defined as the price actually paid or payable for merchandise when sold to the U.S., excluding U.S. import duties, freight, insurance, and other charges incurred in bringing the merchandise to the United States.



@StatistaCharts

Source: U.S. Census Bureau

statista

IN-HOUSE EQUIPMENT / CAPABILITIES

- **Engineering – All Mfg. Processes**
 - **Robust Design & Programming Software/Technology**
- **Welding, Fabricating, & Polishing**
 - **Program Management**
- **Fixture Design & Manufacturing**
 - **Warehousing: 100,000+ Sq. Ft**
- **Quality Control & Metallurgist**
 - **Inventory Management**
- **Full Machine House**
 - CNC Mills & Lathes
 - Wire EDM machines
 - Shafts & Screw Machines
 - Prototyping
- **Full Product Assembly & Packaging**
 - Returnable Containers / Repacks

CAPABILITIES

India, S. Korea, Taiwan, Vietnam, China



WAREHOUSING

200,000+ Sq. Ft
Warehouse in China



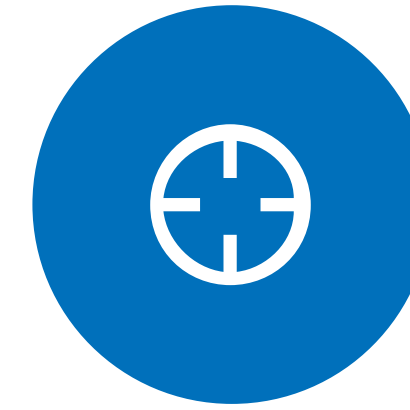
PRODUCT LAUNCH

Product Launch
& PPAP



SHIPPING

Freight
Consolidation with
LTL and Full
Containers able to
ship bulk packed or
individually packed
products



QUALITY

Quality
Assurance &
Product
Inspection



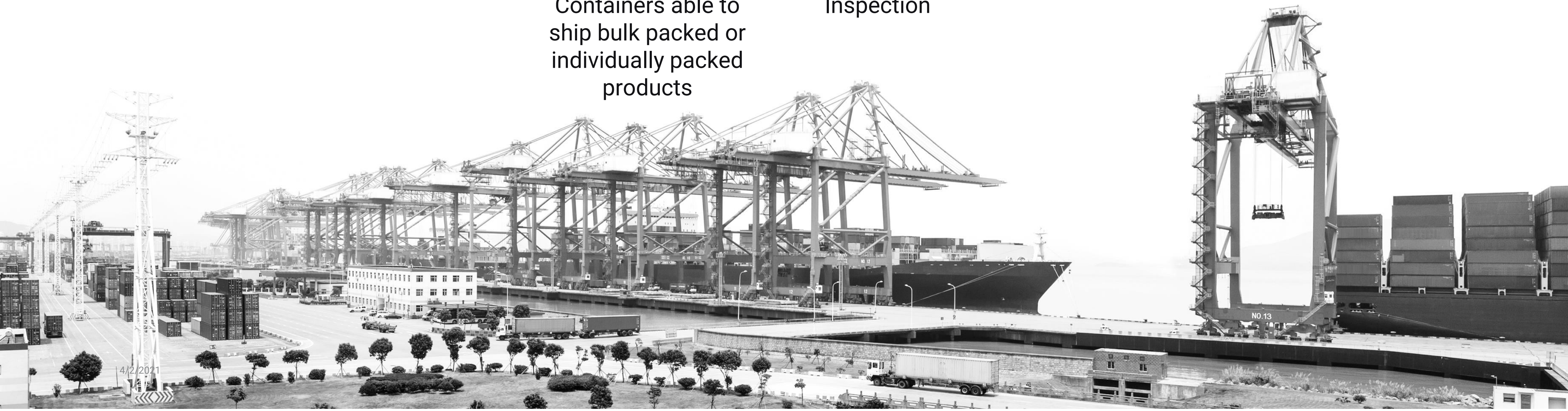
COMMUNICATION

Direct Hire Staff
Overseas



INSPECTION

Supplier Audits
& Inspections



REDUCING CUSTOMER COSTS

JAG differentiates itself from the competition by offering our customers the best options in different manufacturing processes.

- **A to Z Solution Provider**
- **Manufacturing Process Selection**
- **Supplier Consolidation (Eg, DAC)**
- **Freight Consolidation**
- **Tariff Engineering**
- **Currency / Exchange**
- **Raw Material Risks / Costing**
- **Quality Improvement & Control at the Source**
- **Customer Cost Reduction**
 - **Reduced Overhead**
 - **Supplier Consolidation**
 - **Reduced Travel**
 - **Reduced Freight**
- **Reduced Tariffs**
- **Domestic Insurance**

QUALITY

Quality is paramount and our #1 focus; period.

- **Exceed Global Goal of 2,500 DPPM (99.75% or Better)**
- **Quality Assurance / Inspection at:**
 - **Supplier Location,**
 - **Off-Shore Warehouse Location, and/or**
 - **Local Facility**
- **International/Domestic Q/C Team**
- **Experience Metallurgist and Local Lab**
- **Full Design & Engineering Services from Design to Delivery including Redesign for Manufacturability**
- **Fully Integrated Quality Improvement Plan**
- **Inventory Lot Code & Tracking System**

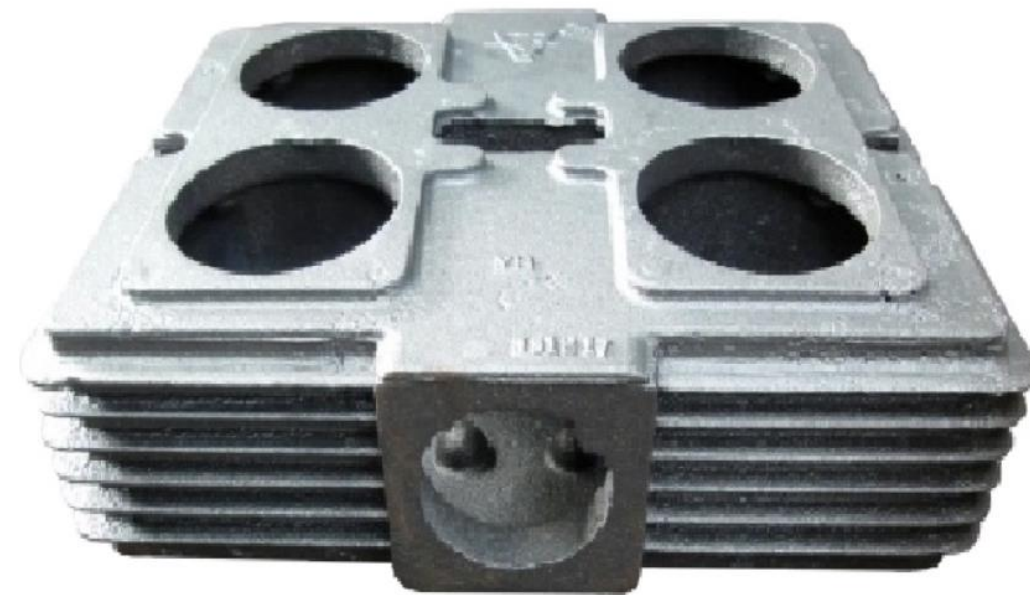


TIMELINESS

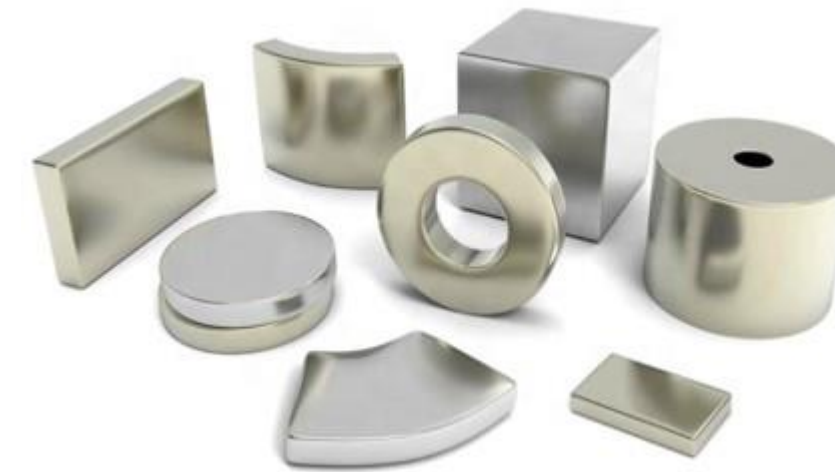
JAG's "A to Z Approach" fast tracks customer response times and delivery.

- **Custom Supply Chain Solutions – 99.4% On-Time Delivery**
- **Quick & Efficient RFQ Process & Turn-Arounds (7-10 days)**
- **Multiple Warehouses in USA**
- **Multiple Warehouses/Manufacturing in Asia, Mexico, CA & KY**
- **International Logistics Team**
- **Support Customer's Kanban & 3PL Requirements**
- **Assembly & Packaging**
- **Ship bulk packed or individually packed products**
- **Eliminate the need for MOQs**
- **Customizable Release Schedules**

CASTINGS (DIE, SAND) & PERMANENT MOLD



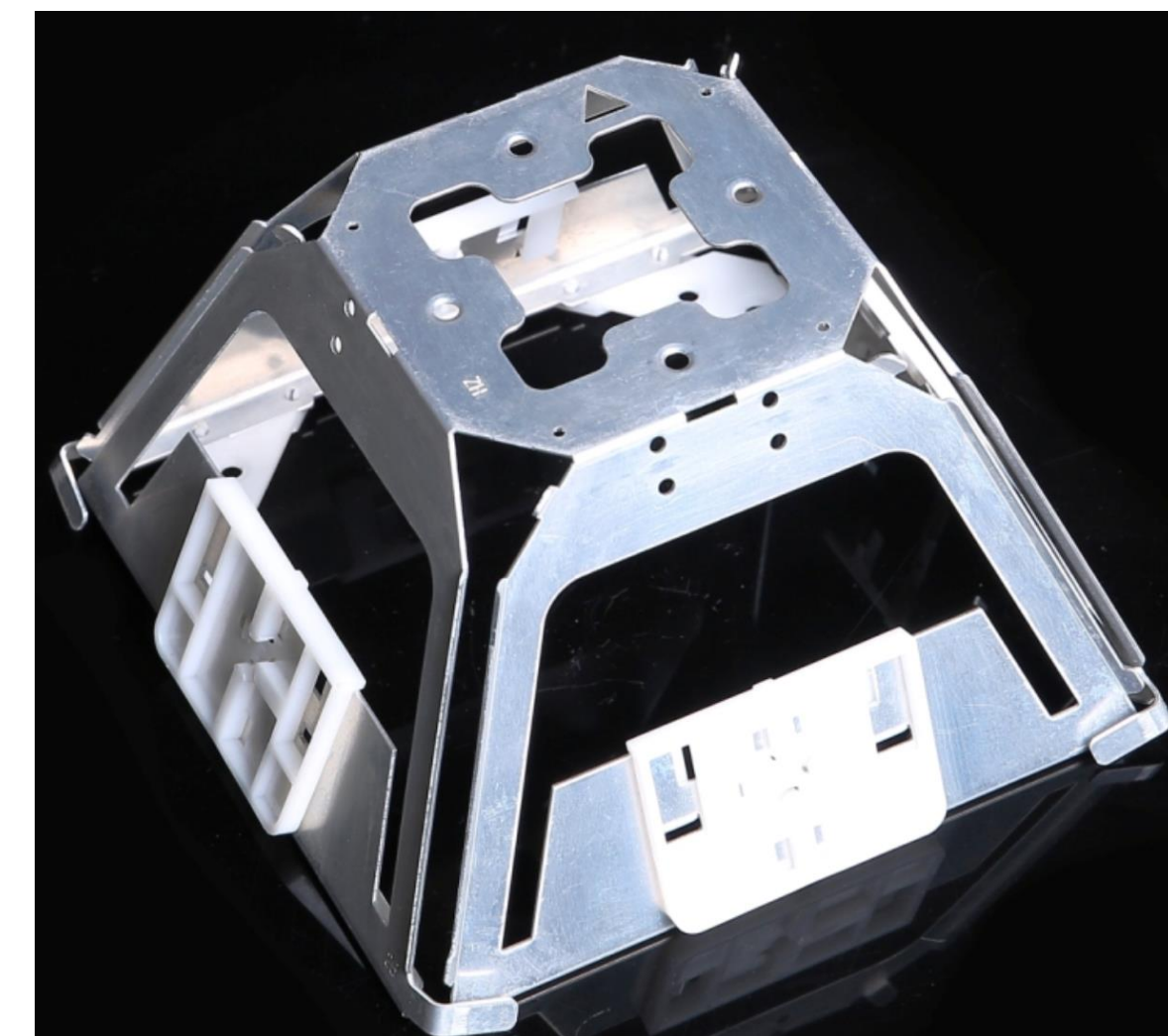
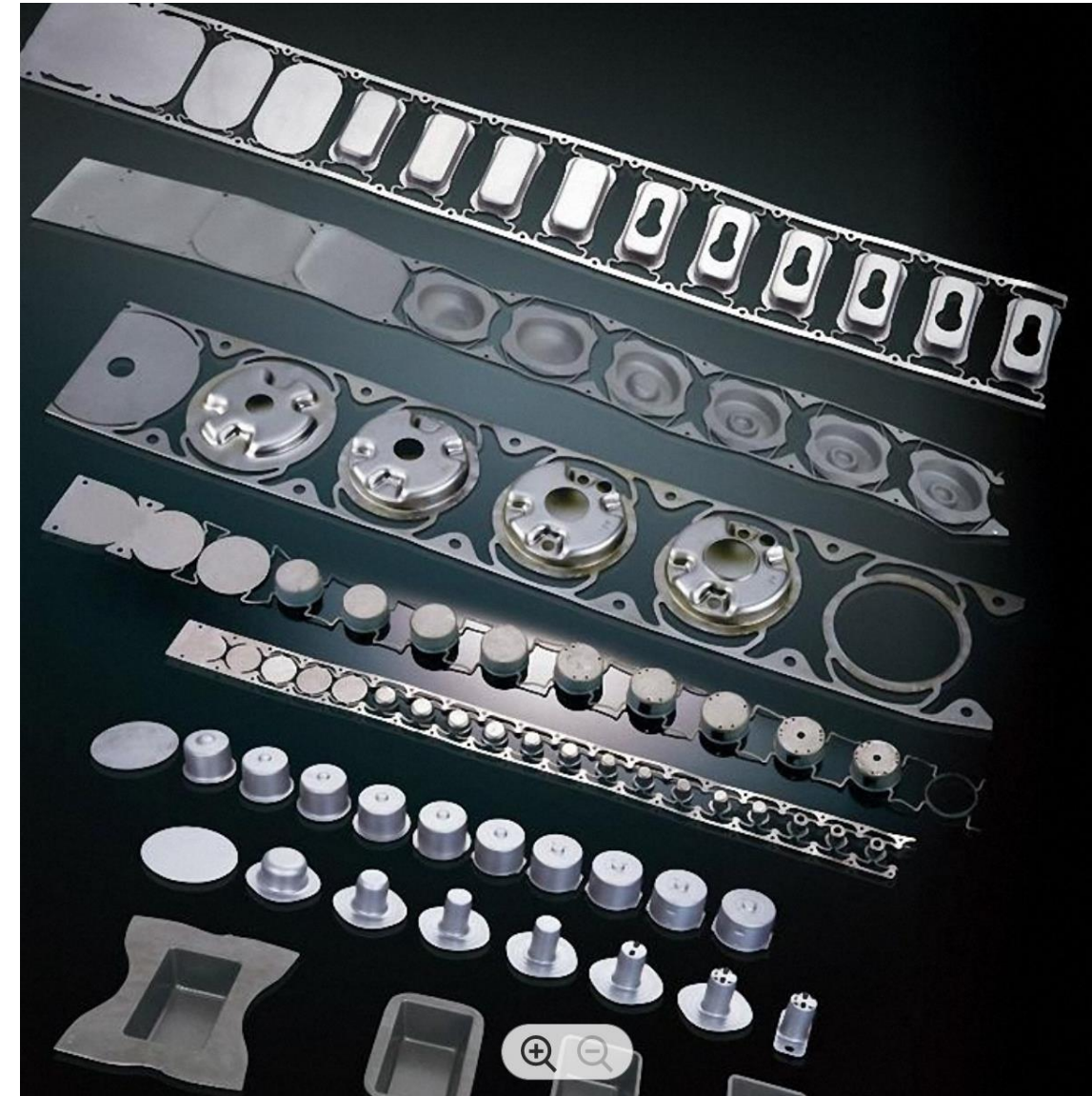
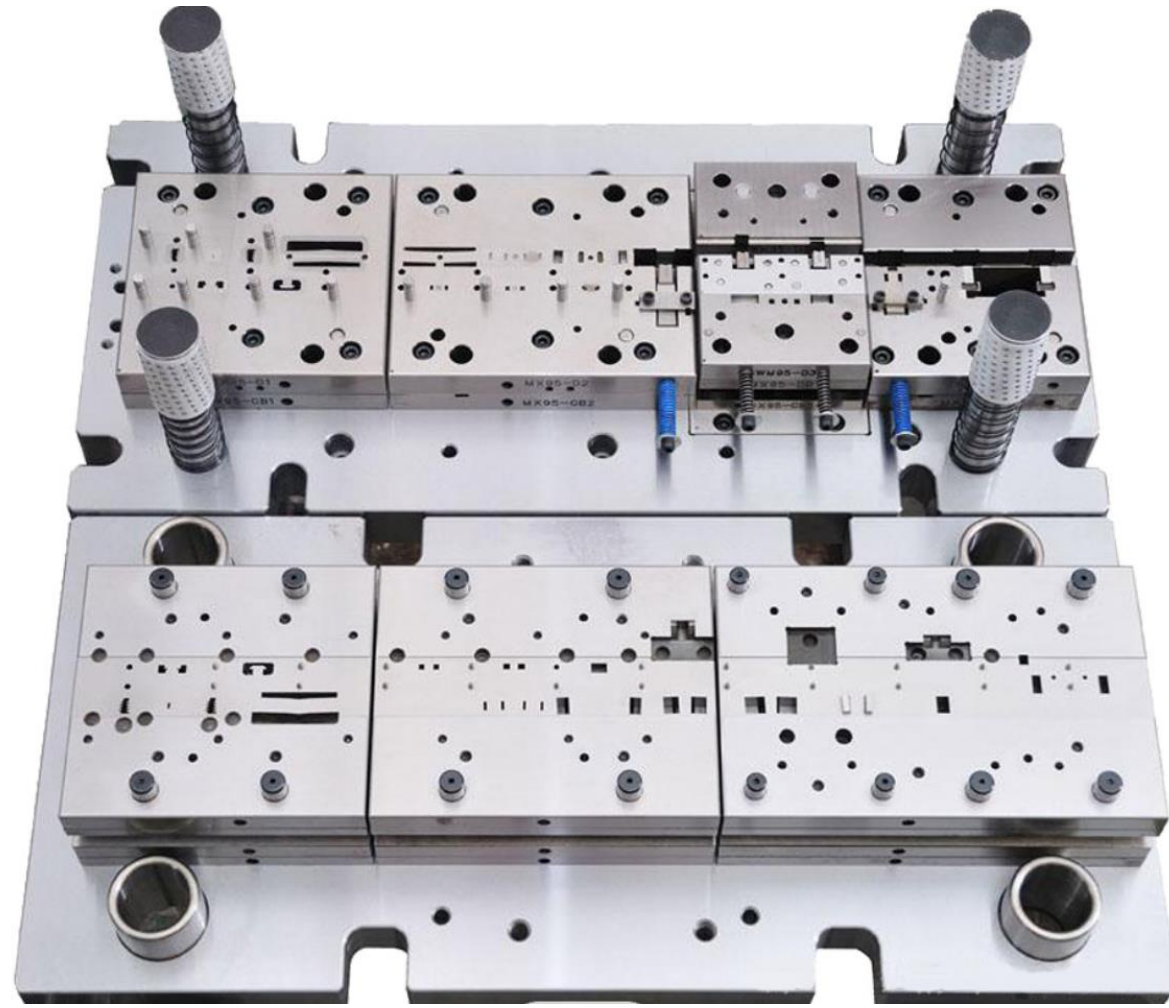
FASTENERS, ETC. (SCREW MACHINE, CNC, FORGED, SPRINGS, MAGNETS)



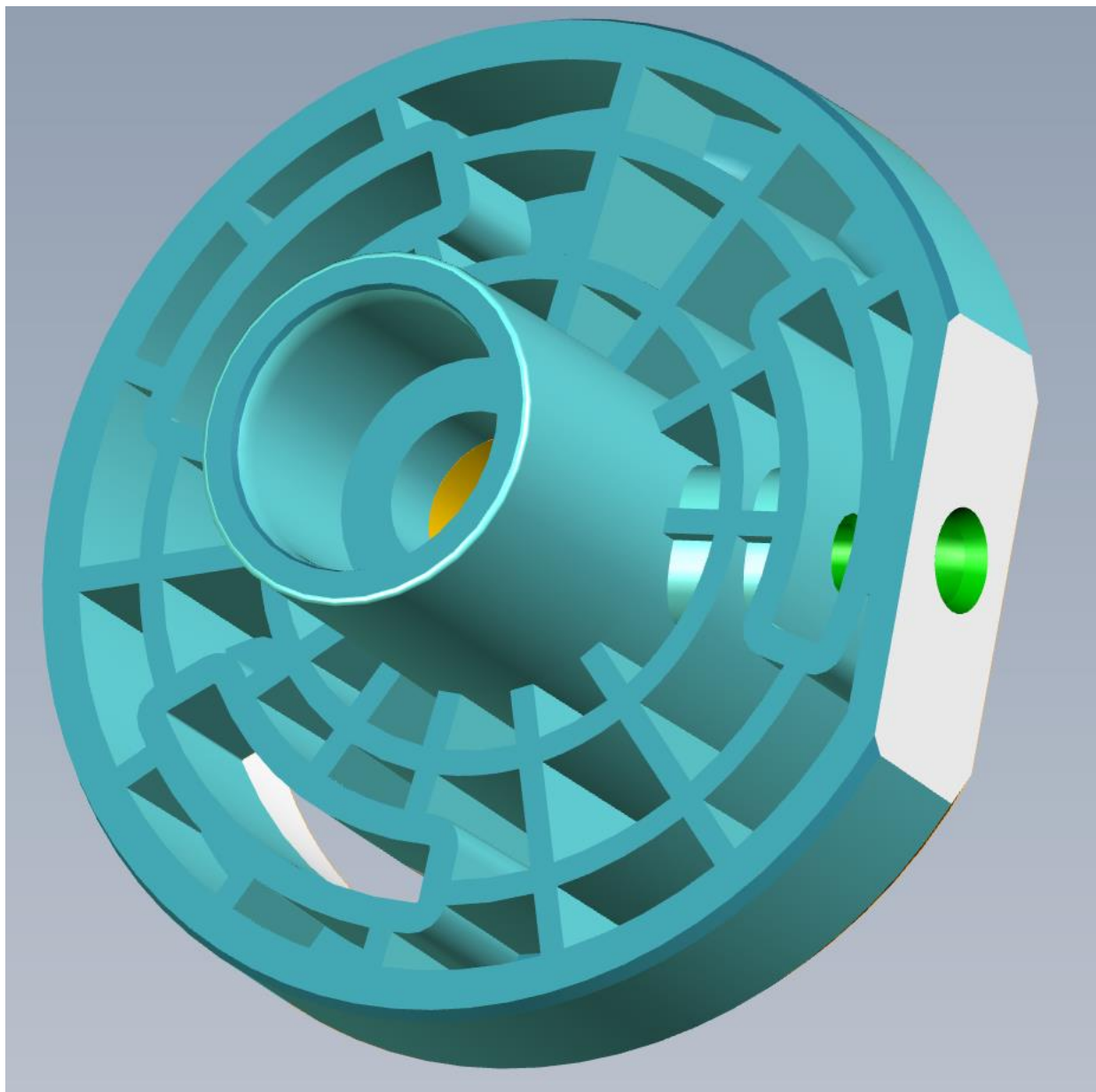
SHAFTS (FORGING, MACHINED, CASTED)



STAMPINGS, DIES & MECHANICAL



PLASTIC INJECTION MOLDS & PRODUCTION PARTS



Pipes/Fittings & Flanges



Pipes & Tubes



Sheets & Plates



Bars & Rods



Nuts & Bolts



Flanges



Threaded Forged Fittings

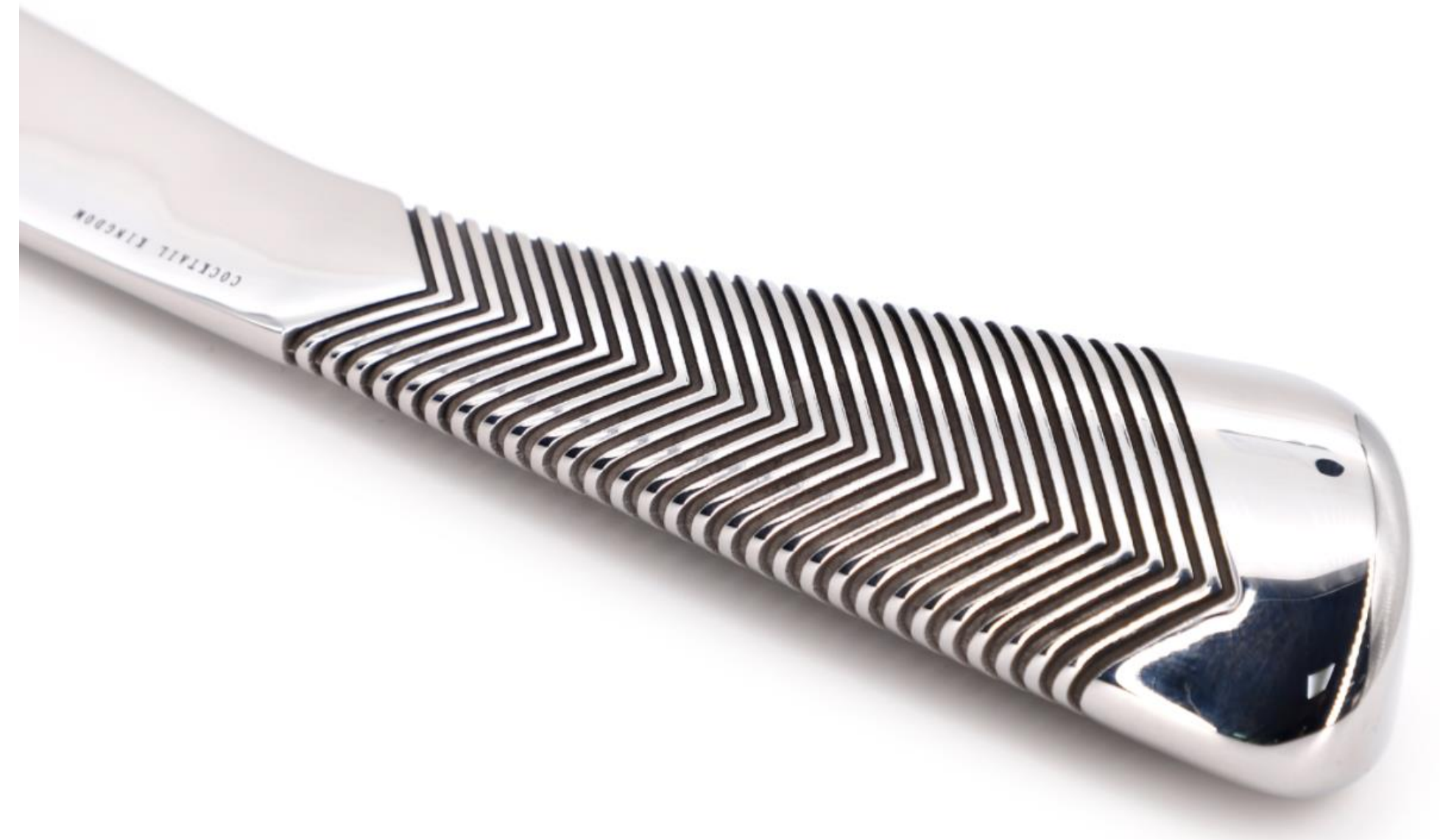


Buttweld Pipe Fittings



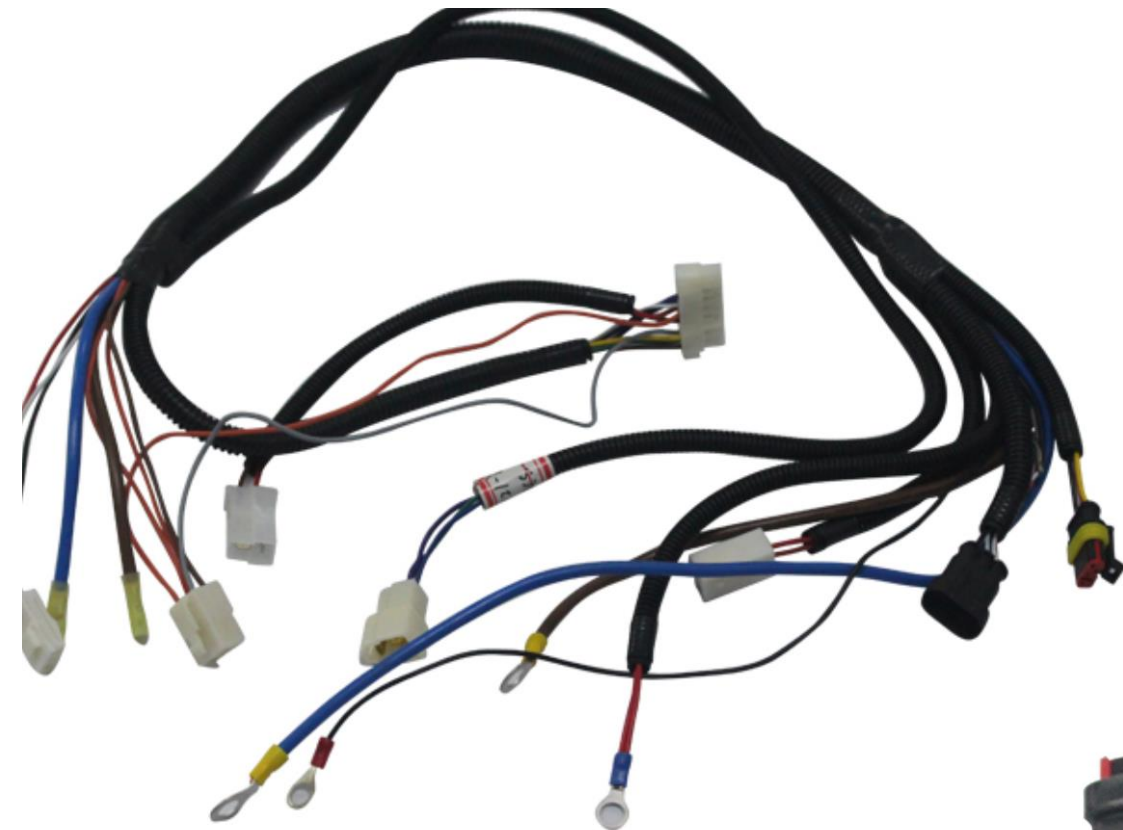
Wire & Wire Mesh

INVESTMENT CASTINGS



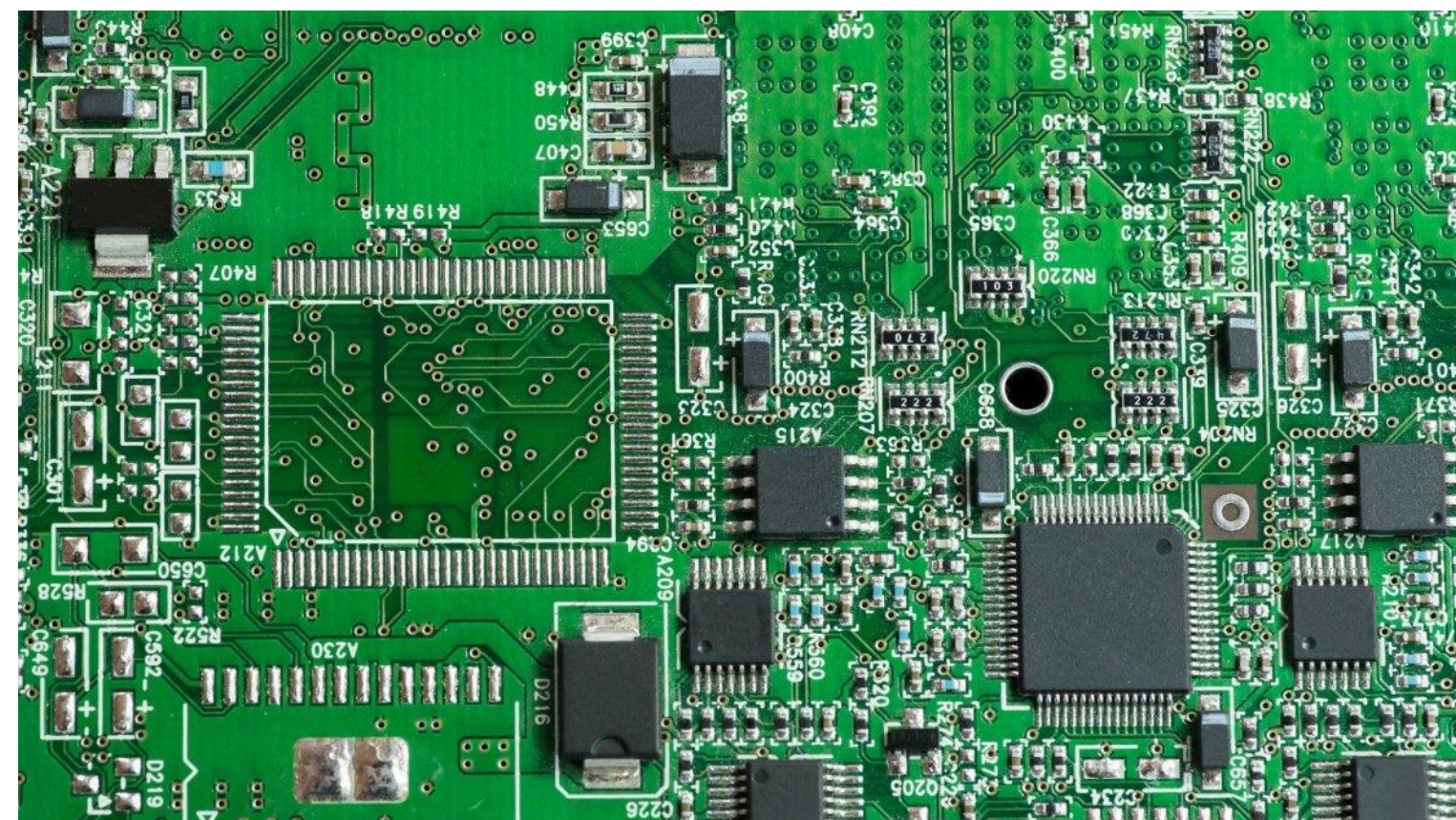
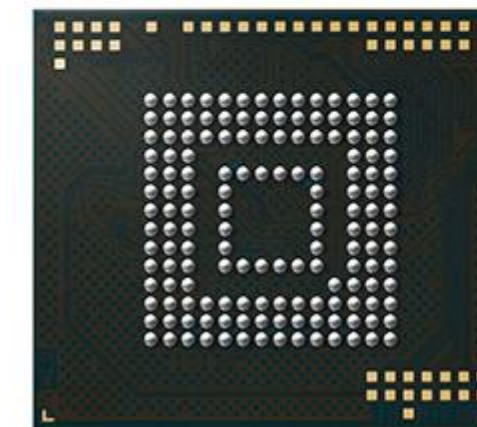
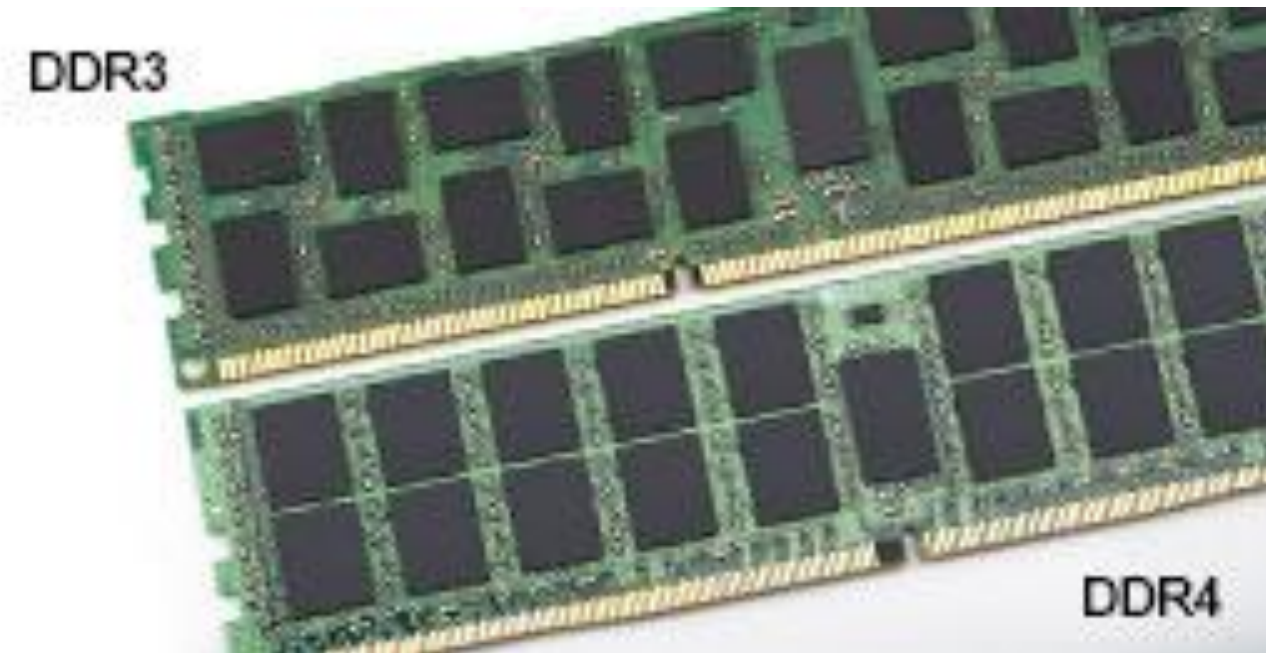
ELECTRICAL ASSEMBLIES

Switch, Ignition coils, Throttle Control, Heating & Cooling, Wire assembly.



PCB, DRAM, STORAGE

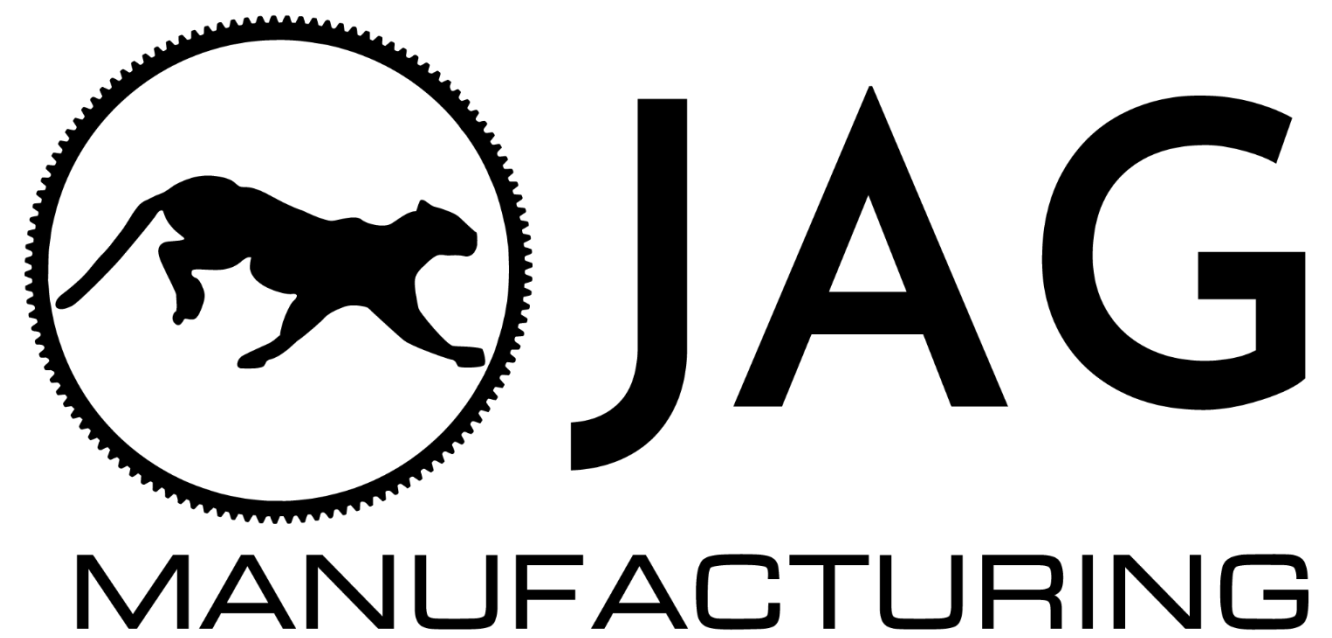
LRDIMM, RDIMM, UDIMM, SO-DIMM,SO-CDIMM, SO-RDIMM, Mini-DIMM, Micro-DIMM and VLP-DIMM, FLASH, Custom PCB's and Housings



FULL PRODUCT ASSEMBLY - START TO FINISH

- Fully Integrated Customer Solutions Offering for Products & Packaging
- Complete Assemblies or Sub-Assemblies in U.S. and/or International
- Full Packaging and Design Capabilities
- Design & Packaging Testing & Development
- Dozens of Privately Labeled Products





YOUR PARTNERS IN SUCCESS!